



Extruders of Custom Thermoplastic  
Profile, Tube and Pipe



Custom Plastic Extrusion is Our Specialty



# Malish: Our Service Attributes, In Alignment with

## About Malish

**Global footprint.  
Local fingerprint.**

Customers choose Malish for our global footprint and strong local support. With manufacturing facilities in North America, Europe and Asia, we're resourceful and effective in driving cost reduction.

**The right fit matters.**

Malish provides the structure and support mechanisms of a large manufacturer with the customized, intimate approach of a smaller specialty group. From strategy to manufacturing to distribution, we deliver a full suite of end-to-end solutions.

**Highly flexible.**

We are optimized to create highly engineered and integrated products that meet and exceed your expectations. We take a customized and innovative approach to each client project and adapt quickly to adjust to the unique requirements of each.

**Rely on Malish.**

We're a reliable partner with the structure and resourcefulness to ensure more agile, quick turn manufacturing without compromising product quality.



## Malish is Here to Make YOUR Project a Reality

As a "job shop," Malish Plastics does not offer a "line of products." Malish is ready to assist in the design and manufacture of YOUR company's products. We know the right questions to ask at the outset of the design process to help ensure the future success of those products. There are many design considerations that should be addressed before any tooling can even be designed.

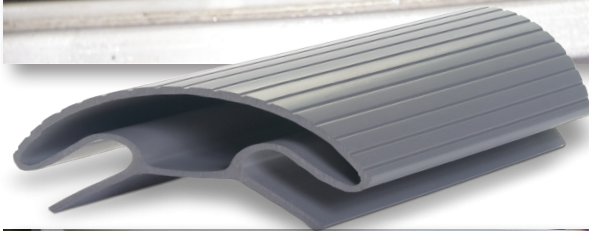
- Which type of plastic is right for this part?
- Does this part mate with another?
- What dimensions are critical to function?
- In what type of environment will this part be used?
- How critical is the color or clarity of the part?
- What type of packaging will suit the needs of the part?
- Is the profile balanced in regards to wall thickness?
- Is the profile better suited to a plastic discipline other than extrusion?
- Are there more cost-effective stock parts on the market?
- What is the expected life cycle of this product?

# h Your Needs.

## Capabilities: Customized Product Development & Engineering Solutions

Malish specializes in cost-effective custom extrusions. Our Engineering Team will help turn your ideas into high-quality finished products. We offer a wide array of options in regard to plastic extrusion and secondary downstream operations including:

- Expertise at close tolerance, heavy-wall pipe, tube, and core extrusion in multiple diameters and wall thicknesses
- Simple to complex "profile extrusion" in various materials
- Co-Extrusion and Tri-Extrusion involving multiple color options, and/or compatible rigid and flexible materials
- Coiling of flexible tube and profiles
- In-line printing & application of adhesives
- Heat Sealing/Welding
- Assembly
- Drilling/Routing/Punching
- Adhesive/Tape Application
- Slitting/Notching
- Bar Coding
- Sewing



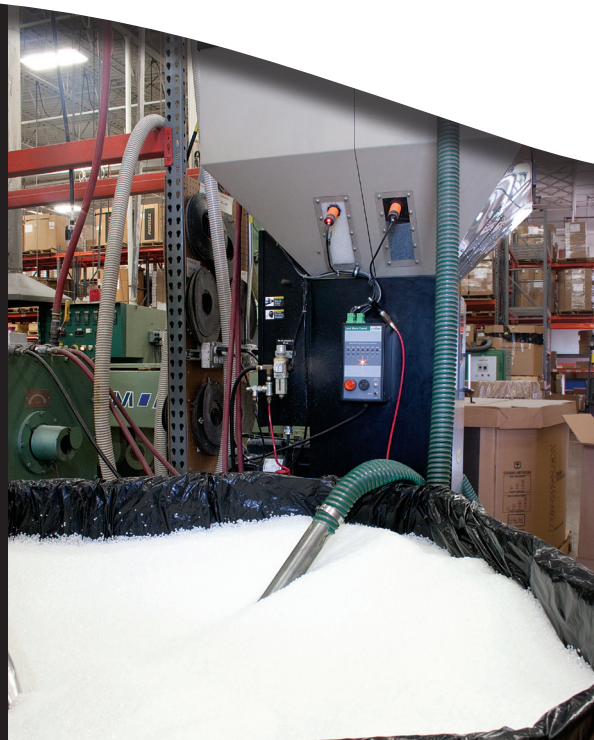


## Our Customer Service is Our Calling Card

Malish Plastics Customer Service is second to none in our industry. In this era of tight lead times, tighter budgets, and increased demands, our staff is wholly focused on THE CUSTOMER, from the person who handed you this brochure, to the person who scrubs the floors, to our CEO; it is our goal to make certain that our customer is successful in THEIR business.

We strive for EXCELLENCE in every project. It's our PLEDGE that we will work to ensure YOUR success.

Malish Plastics, Inc.  
A Division of the Malish Corporation  
7333 Corporate Boulevard  
Mentor OH, 44060  
800.321.7044  
Fax: 440.951.0293  
[info@malish.com](mailto:info@malish.com)  
[www.malishplastics.com](http://www.malishplastics.com)



North America • Asia • Europe

Form No. 814